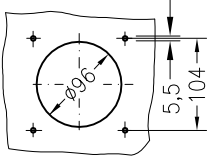
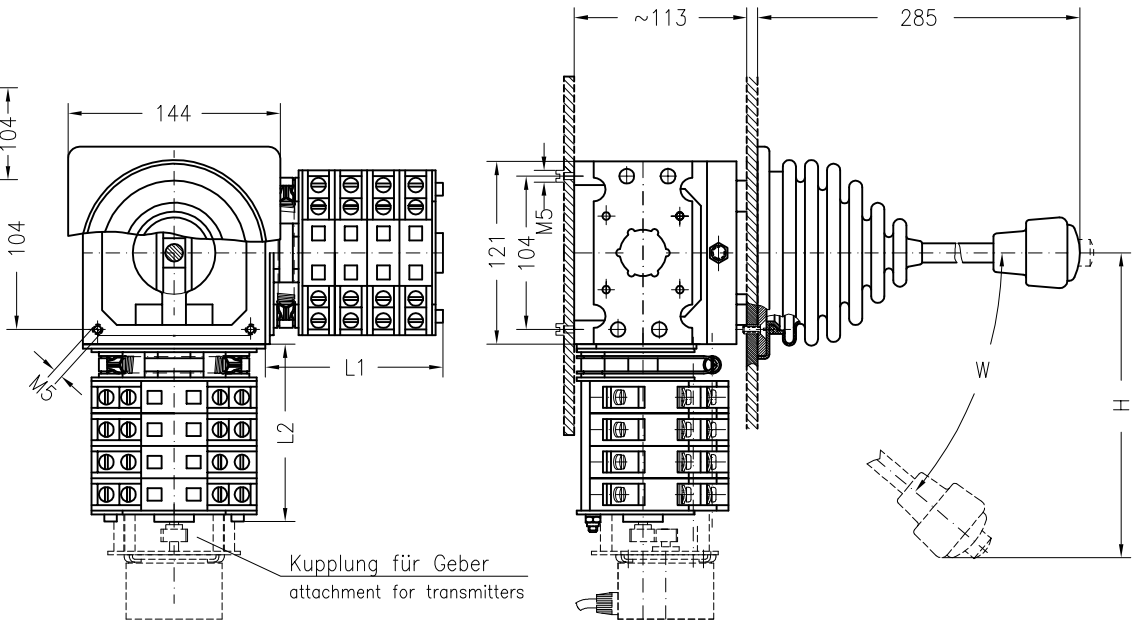
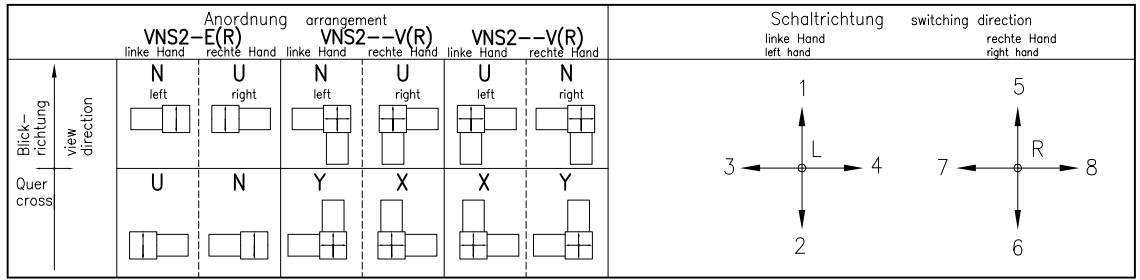
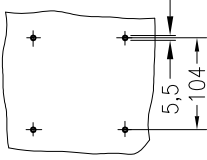


Bohrungen im
Gehäusedeckel
bores at cover



Bohrungen in der
Rückwand
bores at back board



| Anzahl Doppelkontakte number of double contacts | für Wechselstrom mit Blasen für Gleichstrom mit VNSB2-- | | | | | | | | | | VNS2-- for AC with permanent magnet for DC | | Hebelausschlag Stellungen lever deflection Stellungen | | Stellungen A | | W | | | |
|--|--|----|-----|-----|-----|-----|-----|-----|-----|-----|--|-----|--|-----|-----------------|-------|-------|-----|-----|-----|
| | 1 | 2 | 3 | 4 | 5 | 6 | 7 | 8 | 9 | 10 | H | W | H | W | 5-0-5 | 6-0-6 | 200 | 40° | | |
| L1 L2 L3 | 58 | 80 | 102 | 124 | 146 | 168 | 190 | 212 | 234 | 256 | 1-0-1 | 20° | 2-0-2 | 40° | 3-0-3 | 162 | 4-0-4 | 30° | 200 | 40° |

| Antriebsart: drive: Typ VNS(B)2 _T E(R) type | V VNS(B)2 _T V(R) L1 L2 | G VNS(B)2 _T G(R) L1 | GG NS(B)2 _T GG(R) L1 L2 |
|---|---|--------------------------------------|--|
| Zusatz bei Dauer- magnetblase addition by permanent magnet | Anzahl Doppelkontaktelemente number of double contact elements | | |
| | | | |
| Gewicht: Antriebsblock: je Doppelkontakt: | weight: drive: each double contact: | | |
| | 2,8 kg 0,4 kg | 3 kg 0,4 kg | 4,5 kg 0,4 kg |
| H VNS(B)2 _T H(R) L1 L2 | | | |
| | | | |
| | 4 kg 0,4 kg | | |