

MFK Control stations

Optimal for small cabins.



This new series of control stations combines modern dynamic design, functionality and economic efficiency. It doesn't only impress with its optics with special colouring, but also with the construction of the structural parts made of metal.

The arrangement of the command devices in the MFA and joystickbox can be freely selected and thus individually adapted to the application.

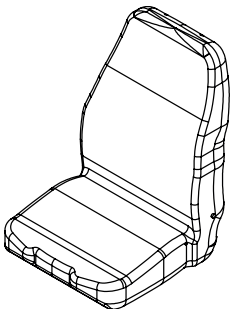
On request, the joystickbox is available with a hand rest for precise work or powder coated with a customer-specific colour, with or without a logo. The joystickbox is mounted on the seat via an adjustable armrest. The adjustment options ensure ergonomic, fatigue-free and comfortable working.

Cables are routed in a plastic hose from the MFA or joystickbox to the base.

Line-up:

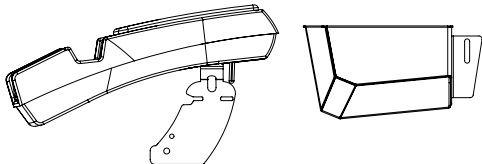
Seats

Sheet Si-S722
Si-S210
Si-S210Y



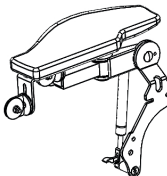
Multifunctional armrest/
Joystickbox

Sheet S-MFK-4/9



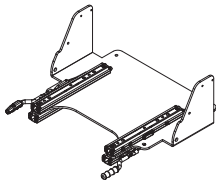
Attachment of Joystickbox

Sheet S-MFK-5/9



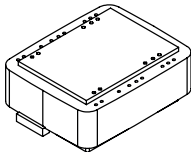
Longitudinal adjustment

Sheet S-MFK-5/9
Sheet S-MFK-6/9



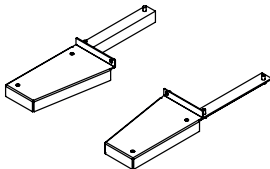
Seat substructure

Sheet S-MFK-7/9



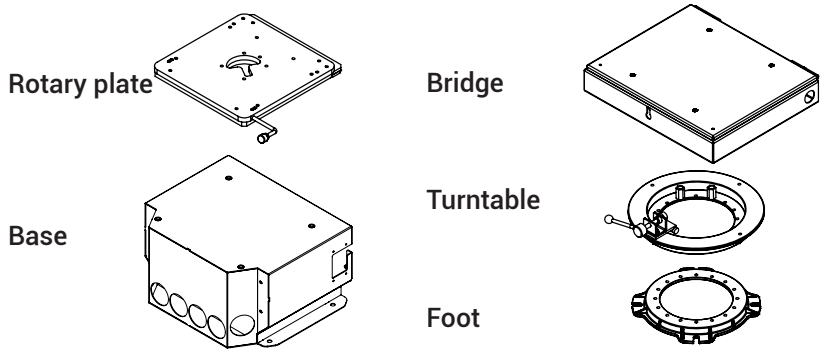
Footrest

Sheet S-MFK-9/9



Base

Sheet S-MFK-8/9



Multifunctional armrest/
Joystickbox

Multifunctional armrest MFA

Version for left and right side
outside plastic, upper part anthracite, lower part grey,
internal metal support frame,
Metal insert plate, black powder-coated with layout for 1x joystick + 3x bore 22,5 mm
Gel cushion for armrest
Flange plate for direct side mounting on the left or right of seat S722 or on special longitudinal adjustments
Adjustment options:
 Stepless tilt adjustment $\pm 10^\circ$
 Can be folded up vertically (quick entry function)

MFA-L

Left version

MFA-R

Right version

Customized colouring

Customized layouts insert plates

Adapters for customized seats

Joystickbox JB

Housing sizes JB-1 and JB-2 as standard, further sizes on request,
symmetrical housing, can be used for the left and right-hand side,
Adapters for attaching joystickbox to adjustable armrest (see S-MFK-5/8), adapters with height adjustment option for adjusting
handle height joystick to armrest height:
 Adapter 1: Height difference 83 mm, adjustment height ± 12 mm
 Adapter 2: Height difference 42,5 mm, adjustment height ± 12 mm
Colouring: RAL7047 tele grey 4 / RAL9011 graphite black

JB-1

Dimensions approx. 135 x 130 x 120 mm (LxWxD)
Drillings for 1x joystick
Adapter 1 or 2

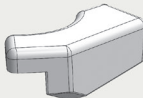
JB-2

Dimensions approx. 192 x 130 x 120 mm (LxWxD)
Drillings for 1x joystick + maximum 6x drillings 16,2 mm
Adapter 1 or 2

Options

Hand rest

For easy and ergonomic operation of the joystick with thumb and forefinger.



Customized colouring

Customized Logo

Inserts/wiring,
Option joystickbox,
Longitudinal adjustment

Inserts/wiring

Joysticks

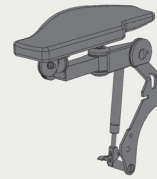
Control devices according to sheet B-1/2, B-2/2

Wiring

Option Joystickbox

VA adjustable armrest

For mounting a joystickbox on seat S722. With many setting options for maximum ergonomics and fatigue-free, comfortable work.



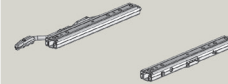
Longitudinal adjustments

In combination with seat S722 (seat see Si-S722-x)

Pair of rails SM11618-L for length adjustment:

Adjustment options:

Seat upper part S722 together with MFA or JB (with option VA) with regard to seat substructure, adjustment range max. ± 100 mm,
Installation between seat upper part and seat substructure



Modules for 2 independent longitudinal adjustment options:

Adjustment options:

Seat upper part S722 together with MFA or JB (with option VA) with regard to seat substructure, adjustment range max. ± 100 mm,
Seat upper part S722 with regard to MFA or JB (with option VA),
Adjustment range max. ± 100 mm,
Installation between seat upper part and seat substructure.

Version LR (PTS70A + SM11618-L):

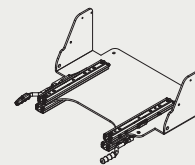
for mounting MFA or JB (with option VA) left and right

Version R (PTS70B + SM11618-L):

for mounting MFA or JB (with option VA) on the right

Version L (PTS70C + SM11618-L):

for mounting MFA or JB (with option VA) on the left



Picture:
Example version LR

Longitudinal adjustments

In combination with seat S210, S210Y (see Si-210-xx, Si-210Y-xx)

Modules for longitudinal adjustment:

Adjustment options:

Seat upper part together with MFA or JB (with option VA) regarding seat substructure,

Adjustment range max. ± 100 mm,

Installation between seat upper part and seat substructure.

Version LR (PTS70A):

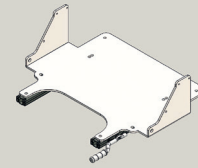
for mounting MFA or JB (with option VA) left and right

Version R (PTS70B):

for mounting MFA or JB (with option VA) on the right

Version L (PTS70C):

for mounting MFA or JB (with option VA) on the left



Picture:
Example version LR

Modules for 2 independent longitudinal adjustment:

Adjustment options:

Seat upper part together with MFA or JB (with option VA) with regard to seat substructure, adjustment range max. ± 100 mm,

Seat upper part with regard to MFA or JB (with option VA),

Adjustment range max. ± 100 mm,

Installation between seat upper part and seat substructure.

Version LR (PTS70A + FSMMD029-A + SM11618-L):

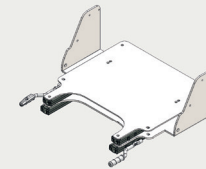
for mounting MFA or JB (with option VA) left and right

Version R (PTS70B + FSMMD029-A + SM11618-L):

for mounting MFA or JB (with option VA) on the right

Version L (PTS70C + FSMMD029-A + SM11618-L):

for mounting MFA or JB (with option VA) on the left



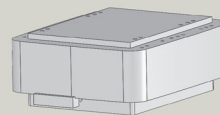
Picture:
Example version LR

Seat substructure: Suspension/
height-tilt adjustments

Mechanical suspensions:

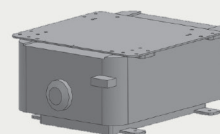
FV

Mechanical suspension with 4-level height adjustment



HFN

Mechanical suspension with height / tilt adjustment

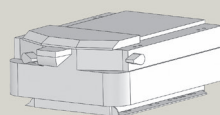


Pneumatic suspension:

P12

Pneumatic suspension with integrated compressor

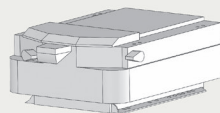
Connection data: 12 VDC 9 A 108 W



P24

Pneumatic suspension with integrated compressor

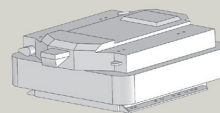
Connection data: 24 VDC 7,5 A 180 W



PF24

Increased pneumatic suspension with integrated compressor

Connection data: 24 VDC 7,5 A 180 W

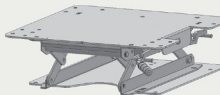


Height-/ tilt adjustments:

SHN03N

Mechanical height / tilt adjustment

Height adjustment max. 60mm



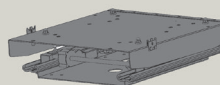
SHN08A

Electric height/tilt/length adjustment,

Height adjustment max.50 mm

Connection data: 12 V, operation max. 10 A, stop 13 A

Controls in the leftside console



Only in combination with console support systems
PTS10, PTS20, PTS30 and footrest mounted on base.

In addition to a suspension

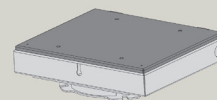
Without suspension with seat extension 60 mm

Base, Rotary devices, Heating

Base

FSA019-3I

Base consisting of a bridge 540x450x95 mm (WxDxH) with a non-rotatable foot, black powder-coated



Rotary devices for base FSA019-3I (turntable instead of non-rotatable foot)

- non-rotating foot not applicable
- Maximum rotation range 270
- turntable and base black powder coated

Mechanical rotary movements:

Versions with eccentric brake for stepless locking:

- Stops at 90° left and 180° right, others on request
- Version with standard turntable
- Version with precision turntable for increased requirements

Versions with notches:

- With 4 locking blocks: 1x each at 90° left, 0°, 90° right, 180° right, others on request
- Version with standard turntable
- Version with precision turntable for increased requirements
- Options:
 - Reinforced notch
 - Emergency release from rear (only possible with notches)
 - Reinforced notch and emergency release from behind

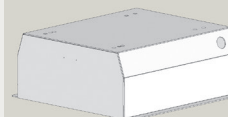
Electric rotary movement:

- With electric motor 24 VDC, selector switch in left side console MFA or JB
- Locking by means of eccentric brake
- Bridge 120 mm high
- Version with precision turntable for increased requirements

Base

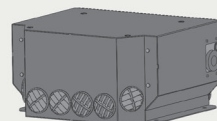
FSK025A

Base made of metal, black powder-coated,
Cover removable at the back



H4K

Base with 4KW comfort heater, black powder-coated,
Control unit in the right side console, control system wired,
Setting options:
stepless fan control, stepless temperature setting, automatic
function, defroster level



Rotary device for base FSK025A, H4K

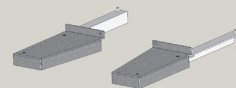
- Turntable with release lever left or right,
only in connection with base H4K or FSK025A
- Installation between the base and seat base
- Rotation angle: 90 ° left - 90 ° right, detent at 0 °

Footrests

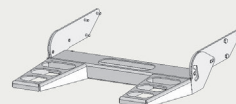
In conjunction with base FSA019-3I

FA29

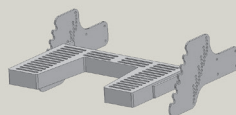
2-part footrest

**FA03**

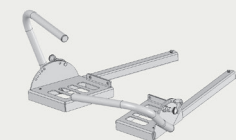
3-level height-adjustable footrest

**FA41**

Height and tilt adjustable footrest

**FA05**

2-part footrest with tilting bull horns

**FA15**

2-part footrest with tilt and fold-away bull horns

