

SV1C-Basic-Line

Optimized for complex applications.



For the control of complex machines and cranes in ports and industrial facilities, robust, fixed or rotary control stations are used. For these tasks Spohn + Burkhardt has developed the SV1C series, diverse configurable control stations in a modular system. For the perfect coordination of operating and sitting and for relaxed,

fatigue-free working, the ergonomically designed SV1C offers a variety of adjustments. In order to adapt to the individual body size our quality comfort seats allow longitudinal, height and tilt adjustment. Our quality seats are equipped with a lumbar support and optionally with a cutout in the seat cushion.

SV1C-Basic-Line

Optimized for complex applications.

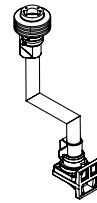


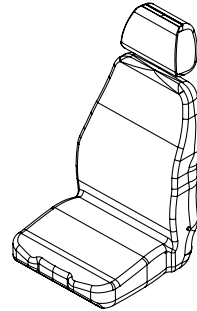
The side desks, standard in rectangular shape, with flat or sloped lids, offer plenty of space for the optimal positioning of control devices and for the installation of electronic modules and clamping rods. The base of the control station consists of a 2 mm sheet steel hollow bridge. It is placed on a low-backlash ball-bearing turntable or a non-rotatable foot and offers interior space for the mechanism of the turning device, the clamping bar and for terminal blocks. It also serves as a support for the large side consoles, the comfortable seat and is a flange point for a footrest. Other special options such as a comfortable seat in genuine leather

with matching headrest, a pneumatic seat suspension with automatic weight adjustment, mechanical longitudinal adjustment of the side consoles, adjustable footrest or monitor holder are available.

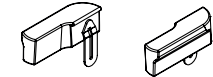
Of course, we also manufacture these control stations with seating systems from different manufacturers and console covers made of stainless steel.

We deliver the optimal control station for your application completely wired, tested, with built-in joysticks, control elements and electronic devices, as plug-and-play version for direct installation, optionally with cabin.

Monitor attachment
 Sheet S-SV1C-BL-9/10

Seats

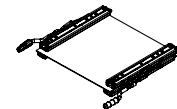
 Sheet Si-S722
 Si-S210
 Si-S210Y
 Si-S700

Armrests

Sheet S-SV1C-BL-8/10

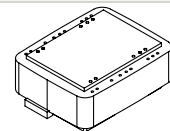
Am Sitz
 (siehe Sitze)

Auf dem
Pult

Longitudinal seat adjustment

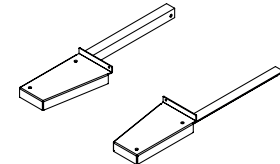
Sheet S-SV1C-BL-7/10


Seat substructure

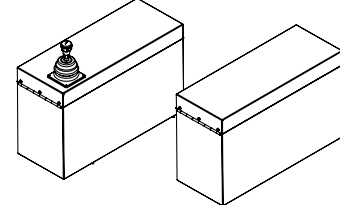
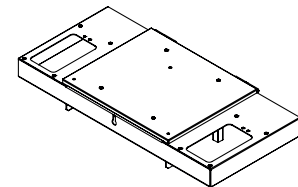
Sheet S-SV1C-BL-6/10


Footrest

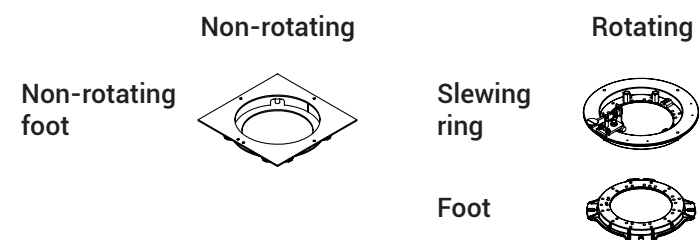
Sheet S-SV1C-BL-8/10


Side consoles

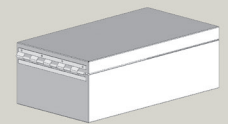
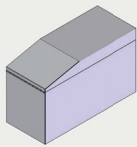
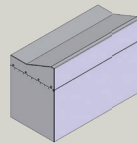
Sheet S-SV1C-BL-4/10


Bridge

Base

Sheet S-SV1C-BL-6/10

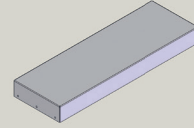

Side consoles

Side console left and right made of metal, powder-coated in RAL7047 telegrey, Console length 600 mm, console height 370 mm, hinged lids with hinges at the frontside and lock at the back, without drillings, cut-outs in the console lids, without inserts

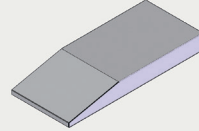
Console Type	Version	Width (mm)	Picture
A	Console lid flat	200, 220	
		230	
		250, 270, 290	
		300	
		320, 350	
AS	Console lid sloped at the front	200	
		230	
		250	
		300	
		350	
AJ	Console lid laterally sloped	300	
		350	

Side console options

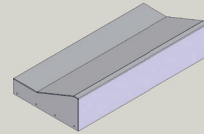
Console lid type A "plane" in stainless steel (V2A), unpainted, brushed



Console lid type AS "sloped at the front" in stainless steel (V2A), unpainted, brushed



Console lid type AJ "laterally sloped" in stainless steel (V2A), unpainted, brushed

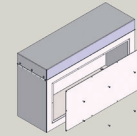


Side consoles complete in stainless steel (V2A)

Removable side covers for sheet steel side consoles:

Side cover screwed

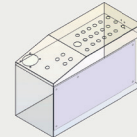
Side cover with 4 quick-release fasteners



Mounting plates in the console:

standing

lying



Manually side console adjustments (by hand):

Side consoles separately forward-backward adjustable (210 mm)

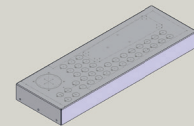
Side consoles separately pivotable outwardly

Holes, cutouts in the console covers, including layout creation

Standard for 2 side consoles: includes each cover: 1 x hole for joystick, max. 10 x

holes for control devices with central fastening

Complex layout (not covered by standard)



Complete customized drawing

Base, options for base

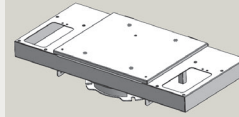
Base consisting of bridge with hinged cover for seat assembly (without seat) and non-rotating foot in RAL9011 graphite black:

Version with bridge 960 x 450 x 80 mm (WxDxH)

suitable for side consoles up to 290 mm width

Version with bridge 1180 x 450 x 80 mm (WxDxH)

suitable for side consoles from 300 to 350 mm width



Options for Base:

Rotating devices:

Slewing ring instead of non-rotating foot

- Maximum rotation range 270°

- Slewing ring and foot powder-coated RAL9011 graphite black

Mechanical rotation systems:

Versions with eccentric brake for stepless locking:

Stops at 90° left and 180° right, others on request

Version with standard slewing ring

Version with precision slewing ring for increased requirements

Versions with notches:

With 4 locking blocks: 1x at 90° left, 0°, 90° right and 180° right, others on request

Version with standard slewing ring

Version with precision slewing ring for increased requirements

Options for versions with notches:

Reinforced notching system

Emergency release from behind

Reinforced notching system and emergency release from behind

Electrical rotation system:

With electric motor 24 VDC, selector switch in the left side console lid

Stops at 90° left and 180° right, others on request

Locking by means of eccentric brake

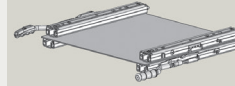
Bridge 120 mm high

Version with precision slewing ring for increased requirements

Seat adjustment, seat substructure:
Suspensions/Height and tilt adjustment

Longitudinal seat adjustment *):

Unit consisting of 2 sets of longitudinal adjustment rails mounted on one intermediate plate.

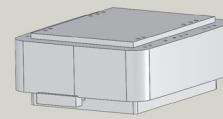


Seat substructure:

Mechanical suspensions:

F

Mechanical suspension with 4-level height adjustment

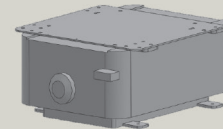


F85 **)

Mechanical suspension with 3-level height adjustment

HFN

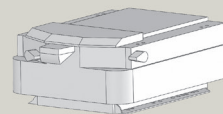
Mechanical suspension with height / tilt adjustment



Pneumatic suspensions:

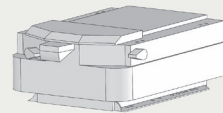
P12

Pneumatic suspension with integrated compressor
Connection data: 12 VDC 9 A 108 W



P24

Pneumatic suspension with integrated compressor
Connection data: 24 VDC 5 A 120 W



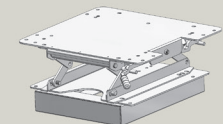
P24A **)

Pneumatic suspension with integrated compressor
Connection data: 24 VDC

Height and tilt adjustments:

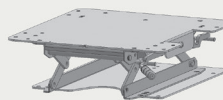
SHN03N + SV1CF 388-60

Mechanical height/tilt adjustment with additional substructure 60 mm high for height adjustment of the seat position



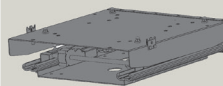
SHN03N

Mechanical height/tilt adjustment in addition to suspension,
- to enable an optimum, ergonomic sitting position, the side consoles are raised by 125 mm
- a height-adjustable footrest is also required
- Footrest and suspension not included in the price



SHN08A

Electrical height/tilt/length adjustment,
Height adjustment max. 50 mm
Connection values: 12 V, operation max. 10 A, stop 13 A
Control elements in the left side console



Without suspension, with additional substructure 60 mm high for height adjustment of the seat position.

In addition to a suspension, with side console height increase of +125 mm
- additionally a height-adjustable footrest is required
- Footrest and suspension not included in the price

*) This unit is always required between the seat base and the seat.

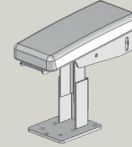
***) Only in combination with comfort seat S700 possible.

Armrests, footrests

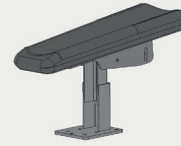
Armrests for mounting on side consoles

AS1-18

Armrest 180 x 80 mm
Height adjustable, longitudinally adjustable, tiltable

**AS1-30**

Armrest 300 x 100 mm
Height adjustable, longitudinally adjustable, tiltable



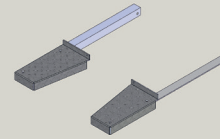
Armrests at the seat

see sheet Si-S722

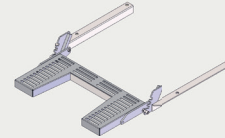
Footrests

FA28

Footrest 2-parted version with:
- Seat position increased by 60 mm
- Side console increased by 60 mm

**FA26**

Footrest height adjustable with:
- Seat position increased by 60 mm
- Side console increased by 60 mm



Monitor attachment

Monitor holders:

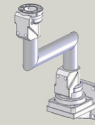
MH14

MH14-FS

Monitor holder

Mounting on left or right side of side console (MH14) or on bridge (MH14-FS)

Monitorarm swivelling



MH15

MH15-FS

Monitor holder

Mounting on left or right side of side console (MH15) or on bridge (MH15-FS)

Monitorarm swivelling and with tilt adapter for monitor housing



Options for MH14, MH14-FS, MH15, MH15-FS:

Monitor adapter:

For Vesa standard 75x75 mm or 100x100 mm

Monitor housing *):

Sheet steel, powder-coated RAL7047 telegrey

MG1 outer dimensions 550 x 390 x 150 mm (WxHxD)

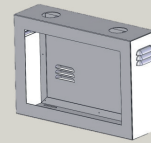
MG2 outer dimensions 300 x 300 x 120 mm (WxHxD)

MG3 outer dimensions 450 x 350 x 120 mm (WxHxD)

MG4 outer dimensions 550 x 470 x 200 mm (WxHxD)

MG5 outer dimensions 620 x 420 x 200 mm (WxHxD)

Other dimensions



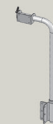
Customised colouring

MH6C

Monitor holder

Light version

Mounting on the side of the left or right console.



Options for MH6C

Monitor adapter:

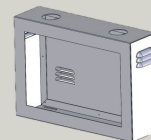
For Vesa standard 75x75 mm or 100x100 mm



Monitor housing*):

Sheet steel, powder-coated RAL7047 telegrey

MG2 outer dimensions 300 x 300 x 120 mm (WxHxD)



*) Notes:

- Please specify cut-out for monitor when ordering.
- Observe the installation guidelines of the monitor.

Inserts, wiring

Inserts:

Control devices

Joysticks

Wiring:

Single core, max. 1.5 mm², 2 clamping points, wire end marking on both sides
(from joystick to PLC, PLC in the side consoles, please note dimensions)

Single core, max. 1.5 mm², 2 clamping points, wire end markings on both sides,
1 terminal (from joystick to terminal, terminals in the bridge or in the side
panels)

SV1C-Premium-Line

Optimized for complex applications.



SV1C-Premium-Line, control stations with attractive design, ergonomics and optimized functionality. The color scheme particularly highlights the design and clearly divides the control station into its functional blocks.

The ergonomically forward and inward sloping operating surfaces of the console form F offer plenty of space for the installation of control devices and their optimal arrangement within the operator's reach and field of vision. For the installation of displays, industrial computers

and other control devices we offer the FM version with additional metal front consoles. With the console form E, the side consoles can be individually adjusted mechanically in height and length in relation to the upper part of the seat. This ensures optimum working position adjustment regardless of the size of the operator and the working situation. As standard, the control stations are supplied with color-contrasting insert plates; these are optionally available in brushed stainless steel or, in the case of console form F, with rear-mounted hinges.

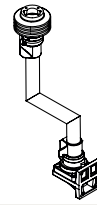
SV1C-Premium-Line

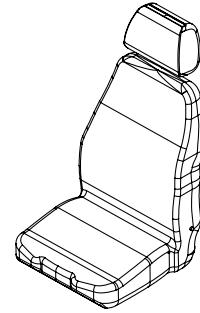
Optimized for complex applications.



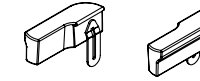
The base, in graphite black, contains in the case of the rotating versions the mechanics of the rotating device and a cable catch rail for secure fastening of the supply lines. At the same time, it serves as a support for a comfort seat with suspension and footrests in various designs. For easy access to the cable catch rail and for wiring to the outside, the upper part of the seat can be folded back.

We also supply these control stations with built-in command devices, fully wired and tested for installation in your application. This control station line provides a high-quality, design-oriented control station for fatigue-free control of big machines or cranes in the industrial and port sector.

Monitor attachment
 Sheet S-SV1C-PL-8/9

Seats

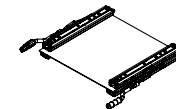
 Sheet Si-S722
 Si-S210
 Si-S210Y
 Si-S700

Armrests

Sheet S-SV1C-PL-7/9

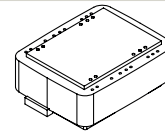
At the seat
 (see seat)

At the console

Longitudinal seat adjustment

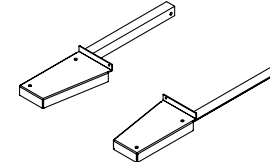
Sheet S-SV1C-PL-6/9


Seat substructure

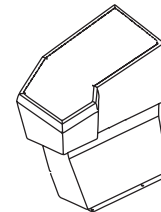
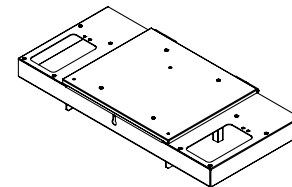
Sheet S-SV1C-PL-6/9


Footrest

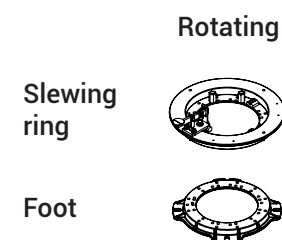
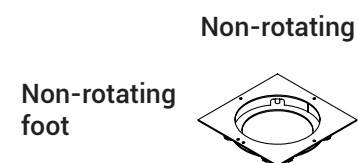
Sheet S-SV1C-PL-7/9


Side consoles

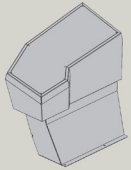
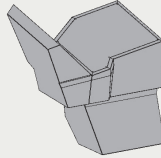
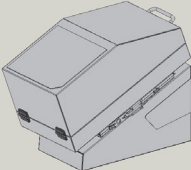
Sheet S-SV1C-PL-4/9


Bridge

Base

Sheet S-SV1C-PL-5/9


Side consoles

Side console left and right made of metal,
 powder-coated
 without drillings, cut-outs in the console lids,
 without inserts

Console Type	Version	Size (WxL) mm	Picture
F	Operating surface inclined inwards and forwards Screwed metal insert plates, powder-coated RAL 7016 anthracite grey Console top RAL 7047 Telegrey 4 Console base RAL 9011 Graphite black Dimensions see TI-SV1C-PL1/4	ca. 311 x 640*) ca. 400 x 570*)	
FM	Operating surface inclined inwards and forwards Left and right-hand front consoles for monitor installation Screwed metal insert plates, powder-coated RAL 7016 Anthracite grey Console top, front console RAL 7047 Telegrey 4 Console base RAL 9011 Graphite black Dimensions see TI-SV1C-PL-2/4	Console cover ca. 400 x 570*) Monitor front ca. 400 x 400	
E	Console top sloped at the front Side consoles individually mechanically adjustable forward-backward (± 100 mm) Side console top individually mechanically height-adjustable Console top with hinges at front, lock at rear, Screwed sheet steel insert plates on top of console in RAL 7016 anthracite grey Console top RAL 7047 telegrey 4 Console base RAL 9011 Graphite black Dimensions see TI-SV1C-PL-3/4, 4/4	230 x 500 250 x 500 300 x 500	

Side console options

Console Type F Insert plates V2A brushed, unpainted

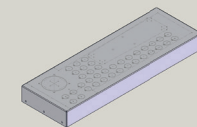
Console Type F Insert plates of console cover with hinges (at the backside)

Holes, cutouts in the console covers, including layout creation:

 Standard for 2 side consoles: includes each side: 1 x hole for joystick, max. 10 x holes, \varnothing 22,5 mm for control devices with central fastening

Complex layout (not covered by standard)

Complete customized drawing

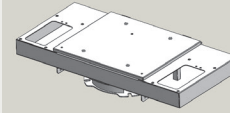


*) Console form not rectangular!

Base, options for base

Base consisting of bridge with hinged cover for seat assembly (without seat) and non-rotating foot in RAL9011 Graphite black.

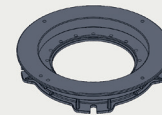
Version with bridge 960 x 450 x 80 mm (WxDxH)
suitable for side consoles type E up to width 250 mm, F, FM
Version with bridge 1180 x 450 x 80 mm (WxDxH)
suitable for side consoles type E with width 300 mm



Options for Base:

Rotating devices:

- Slewing ring instead of non-rotating foot
- Maximum rotation range 270°
- Slewing ring and foot black powder-coated RAL9011



Mechanical rotation systems:

Versions with eccentric brake for stepless locking:

Stops at 90° left and 180° right, others on request
Version with standard slewing ring
Version with precision slewing ring for increased requirements

Versions with notches:

With 4 locking blocks: 1x at 90° left, 0°, 90° right and 180° right, others on request
Version with standard slewing ring
Version with precision slewing ring for increased requirements

Options for versions with notches:

- Reinforced notching system
- Emergency release from behind
- Reinforced notching system and emergency release from behind

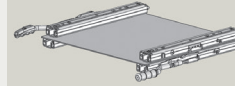
Electrical rotation system:

With electric motor 24 VDC, selector switch in the left side console lid
Stops at 90° left and 180° right, others on request
Locking by means of eccentric brake
Bridge 120 mm high
Version with precision slewing ring for increased requirements

Seat adjustment, seat substructure:
Suspensions/Height and tilt adjustment

Longitudinal seat adjustment *):

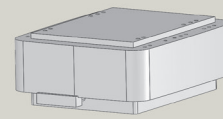
Unit consisting of 2 sets of longitudinal adjustment rails mounted on one intermediate plate.



Seat substructure:

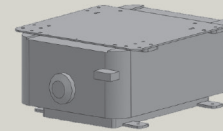
Mechanical suspension

F
Mechanical suspension with 4-level height adjustment



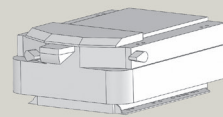
F85 **)
Mechanical suspension with 3-level height adjustment

HFN
Mechanical suspension with height / tilt adjustment

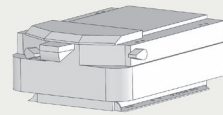


Pneumatic suspension:

P12
Pneumatic suspension with integrated compressor
Connection data: 12 VDC 9 A 108 W



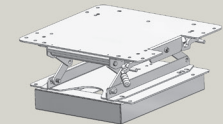
P24
Pneumatic suspension with integrated compressor
Connection data: 24 VDC 5 A 120 W



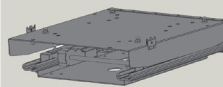
P24A **)
Pneumatic suspension with integrated compressor
Connection data: 24 VDC

Height and tilt adjustment:

SHN03N + SV1CF 388-60
Mechanical height/tilt adjustment with additional substructure 60 mm high for height adjustment of the seat position



SHN08A
Electrical height/tilt/length adjustment,
Height adjustment max. 50 mm
Connection values: 12 V, operation max. 10 A, stop 13 A
Control elements in the left side console



Without suspension, with additional substructure 60 mm high for height adjustment of the seat position.

*) This unit is always required between the seat base and the seat.

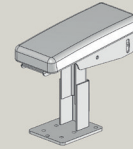
**) Only in combination with comfort seat S700 possible.

Armrests, footrests

Armrests for mounting on side consoles

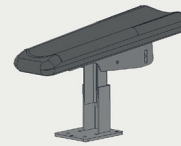
AS1-18

Armrest 180 x 80 mm
Height adjustable, longitudinally adjustable, tiltable



AS1-30

Armrest 300 x 100 mm
Height adjustable, longitudinally adjustable, tiltable



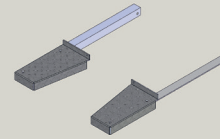
Armrests at the seat

see sheet Si-S722
Si-S210
Si-S210Y
Si-S700

Footrests

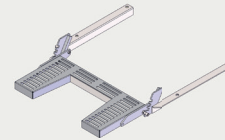
FA28

Footrest 2-parted version with:
- Seat position increased by 60 mm
- Side console increased by 60 mm



FA26

Footrest height adjustable with:
- Seat position increased by 60 mm
- Side console increased by 60 mm

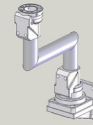


Monitor attachment

Monitor holders:

MH14-FS

Monitor holder
Mounting on left or right side of side console or on bridge
Monitorarm swivelling



MH15-FS

Monitor holder
Mounting on left or right side of side console or on bridge
Monitorarm swivelling and with tilt adapter for monitor housing



Options for MH14-FS, MH15-FS:

Monitor adapter:

For Vesa standard 75x75 mm or 100x100 mm

Monitor housing *):

Sheet steel, powder-coated RAL7047 telegray

MG1 outer dimensions 550 x 390 x 150 mm (WxHxD)

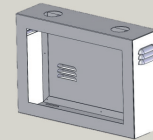
MG2 outer dimensions 300 x 300 x 120 mm (WxHxD)

MG3 outer dimensions 450 x 350 x 120 mm (WxHxD)

MG4 outer dimensions 550 x 470 x 200 mm (WxHxD)

MG5 outer dimensions 620 x 420 x 200 mm (WxHxD)

Other dimensions



Customised colouring

* Notes:

- Please specify cut-out for monitor when ordering.
- Observe the installation guidelines of the monitor.

Inserts, wiring

Inserts:

Control devices

Joysticks

Wiring:

Single core, max. 1.5 mm², 2 clamping points, wire end marking on both sides
(from joystick to PLC, PLC in the side consoles, please note dimensions)

Single core, max. 1.5 mm², 2 clamping points, wire end markings on both sides,
1 terminal (from joystick to terminal, terminals in the bridge or in the side panels)

