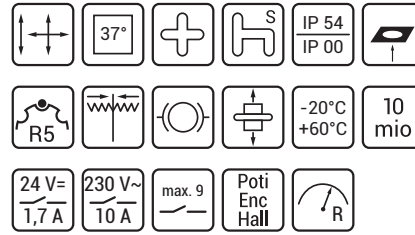
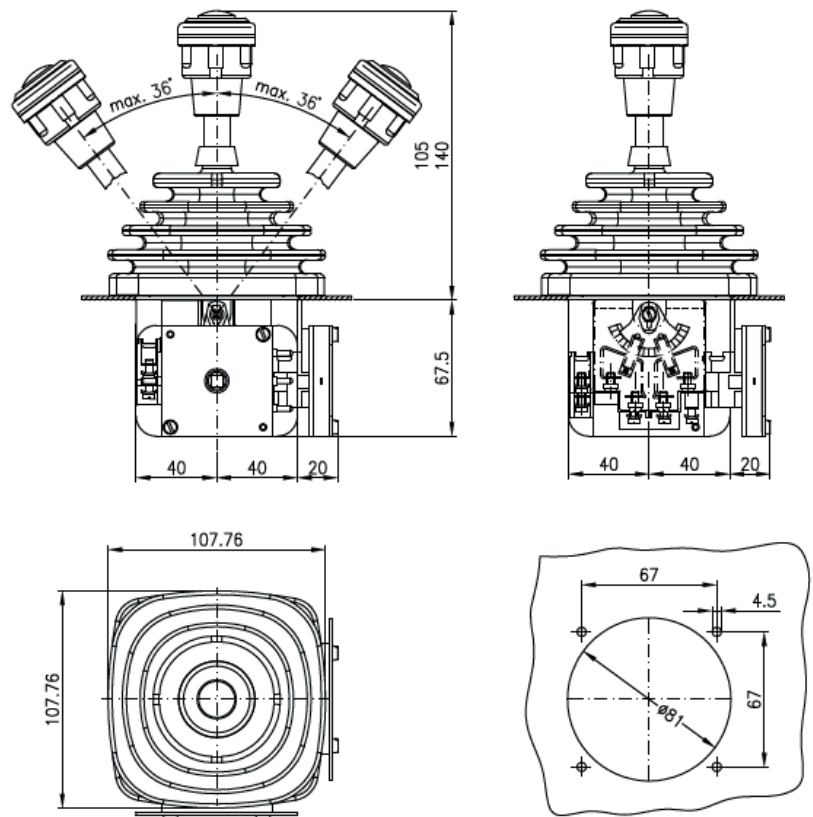


VCS0

Our classic.



Picture:
Rubber boot with invisible holder (S3 combination)

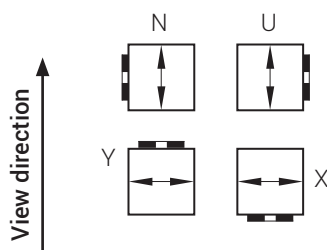


For medium-duty applications, we recommend this joystick which has been field-proven in use for decades. The drive block with special leak-current-proof, heat-resistant and cold-resistant insulation supports all mechanical components and serves as contact protection for the electrically conductive parts. An optional zero position, horn, or deadman contact (operator presence) can be integrated in the drive block for space-saving and protected installation. Insulated double contact elements for up to 250 V and 10 A are intelligently positive locking and additionally flanged securely on the drive block. Various

gates are available for mechanical limiting or guidance of the direction of movement. Standard and special circuits can also be provided with the use of up to four double contact elements per axis. Suitable potentiometers and encoders can be docked with the use of a simple sliding coupling or directly instead of a double contact element. In addition to numerous special equipment applications, this joystick is supplied as standard equipment for cranes, control stations, and in portable control consoles – thanks to its low weight.

Drive E

Arrangement U, N, X, Y

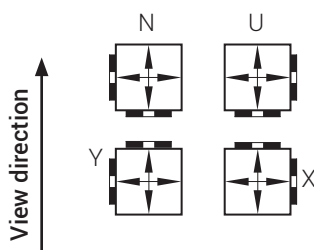


VCS0 S3 -- AK E

U
N
X
Y

Drive V

Arrangement U, N, X, Y



VCS0 S3 -- AK V

U
N
X
Y

Project planning information:

In case of missing declaration of arrangement, version U will be produced.

The orientation of the handles is always in the view direction.
The view direction is defined by the drive and the arrangement.

Legend:



— Mounting direction potentiometer/encoder

Scope of supply, options,
additional charge, type code

Scope of supply VCS0

- Standard handle G41 (without installation)
- Rubber boot with holder (S3 combination)*
- Limiting gate 36°-0-36°

Options

Handles	see G-Ü
Potentiometer	see E-Electronic-1, -2
Circuits	see TI-S-5
Technical data	see TI-1
Dimensions	see TI-VCS0-...

Additional charge:

- Circuits

- Spring return
- Friction brake

- Special limiting gate
- Cross gate
- Special gate
- Slot gate 1)

- Special notching segment

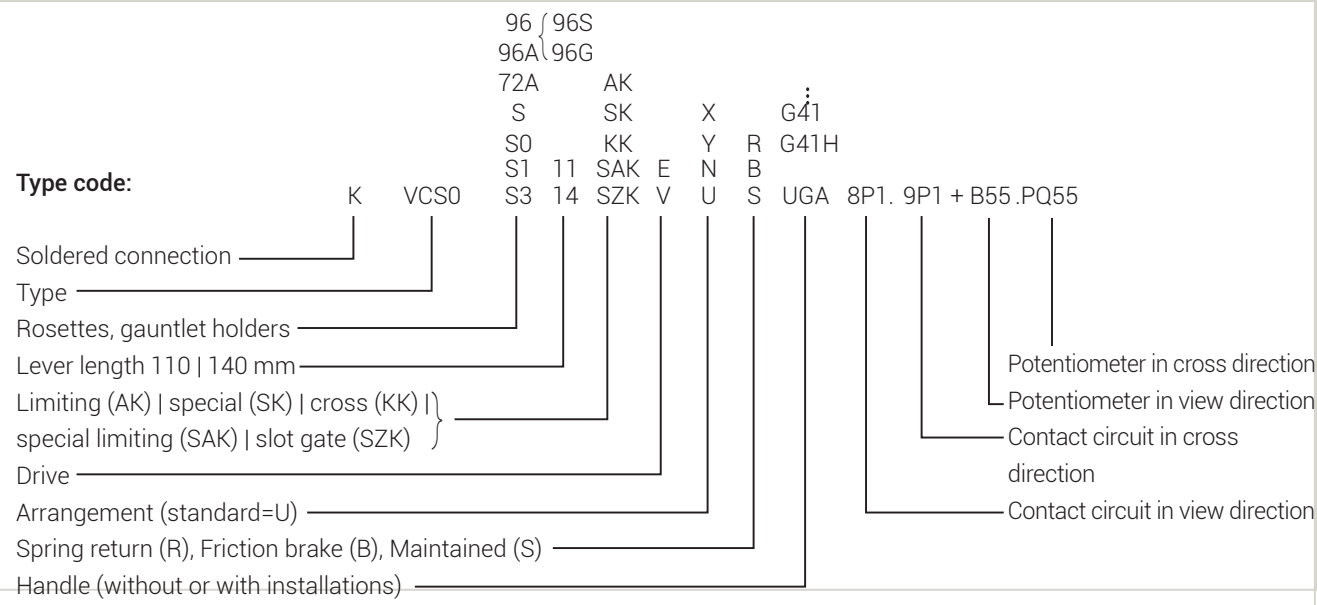
- Rosette labeling for version 96,96A
(max. 14 characters per direction, specification in plain text)

- Aluminium-escutcheon plate black 72x72 or 96x96
(escutcheon plate 72x72 not inscribable)
- Plastic escutcheon plate 96x96, transparent with foil,
foil freely inscribable
- Plastic escutcheon plate black
- Version with screwed plastic rosette
and 2 seals according to V04828-2
- Escutcheon plate V048-100-A1,
necessary in combination with UGN-handle
- Escutcheon plate
- Mechanical interlock

- Wiring to connection cable or plug

Type code:

	see J-VCS0-4/4
R	
B	
SAK	
KK	
SK	
SZK	
72A, 96A	
96	
96S	
96G	
S1	
S, S0	
Z, IZ, ...	



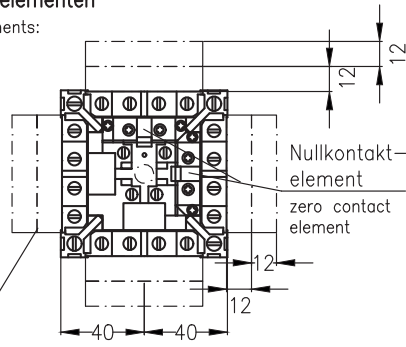
* Please consider the dimensions on page J-VCS0-1/2.

1) Required for E-drive with mechanical interlock.

Grundausführung mit Doppelkontaktelementen
standard version with double contact elements:

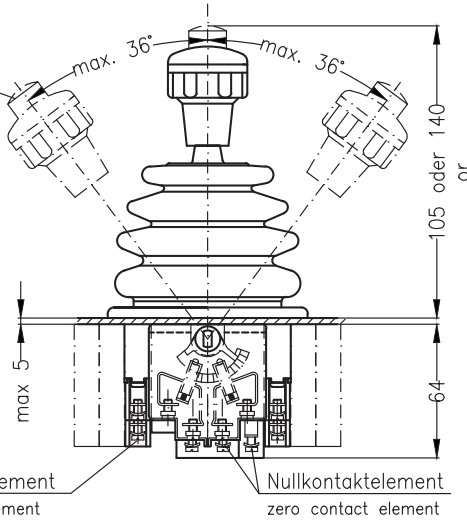
Ansicht von unten
bottom view

max. 3 Doppelkontakte
je Seite
max. 3 double contacts
each side

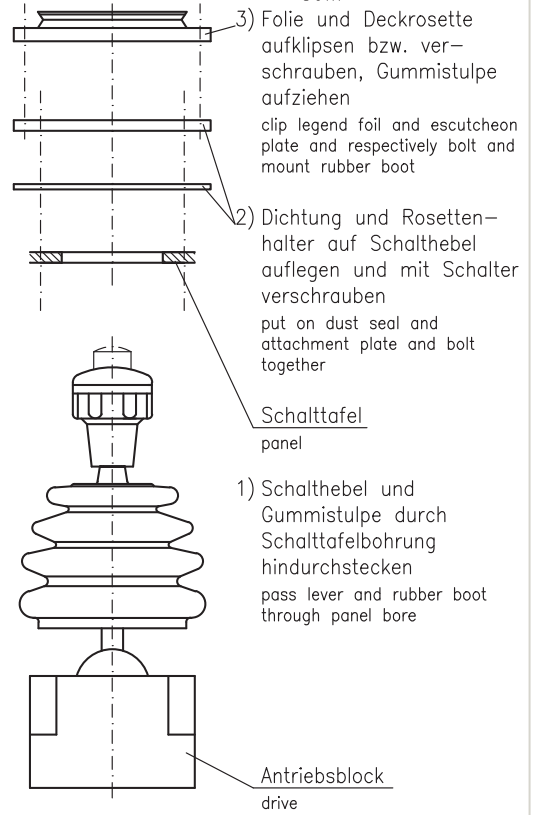


Auf Wunsch
H-Taste
on request
H-push button

Weitere
Einbauten im Hebel
siehe Seite G...
additional
see sheet G...



Montageanleitung Ausführung 96...
assembly instructions: version 72...
S...
S0...

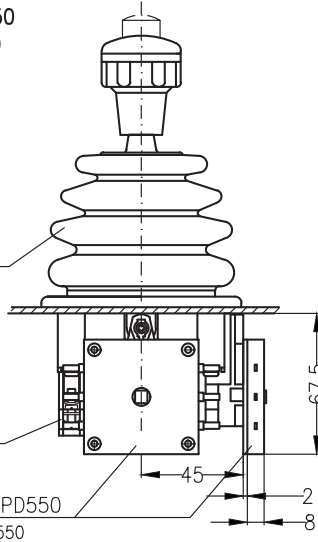


Ausführung mit Potentiometer PD550
version with attached potentiometer PD550

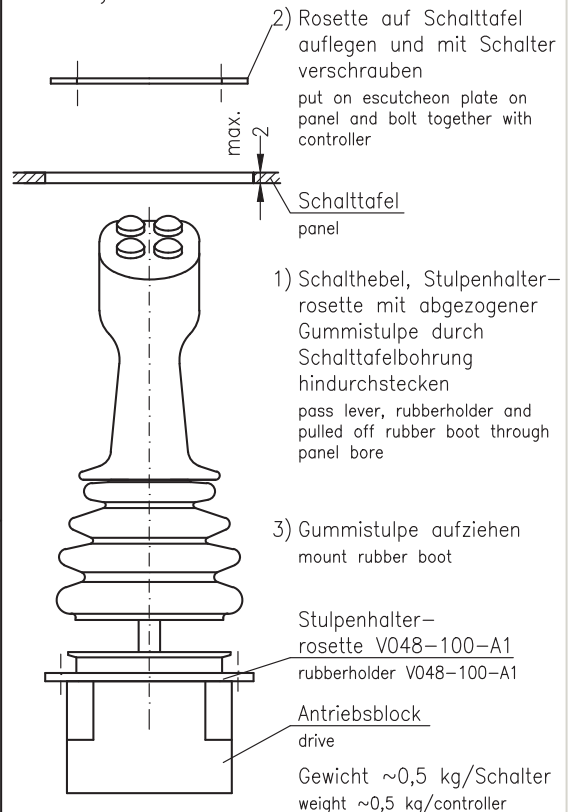
Gummistulpe V041N
rubber boot V041N

Doppelkontaktelement
double contact element

Potentiometer PD550
potentiometer PD550



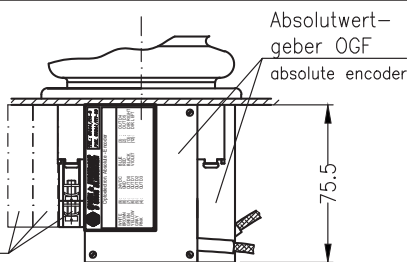
Montageanleitung Ausführung S1...
assembly instructions: version



Ausführung mit optoelektronischem Absolutwertgeber
siehe Blatt TI-Encoder-4 bis -6
version with optoelectrical absolute encoder according
see sheet TI-Encoder-4 till -6

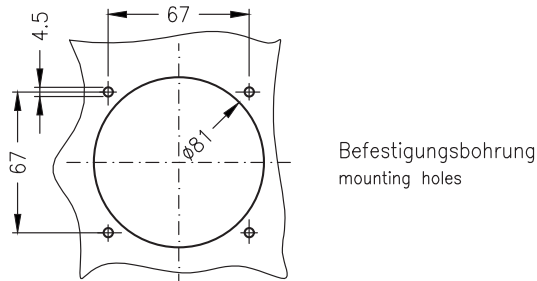
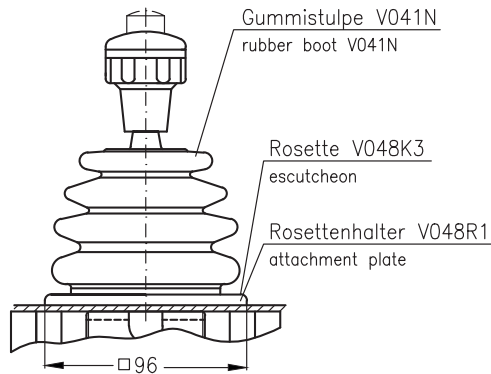
max. 3 Doppelkontaktelemente
max. 3 double contact elements

Absolutwert-
geber OGF
absolute encoder



Ausführung VCS0 96...

mit transparenter Kunststoff-Rosette 96x96 und Beschriftungsfolie
with transparent escutcheon plate 96x96 and inscription foil

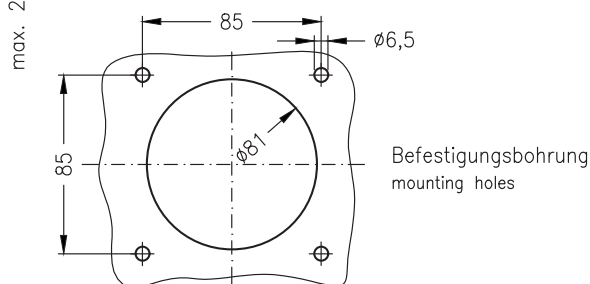
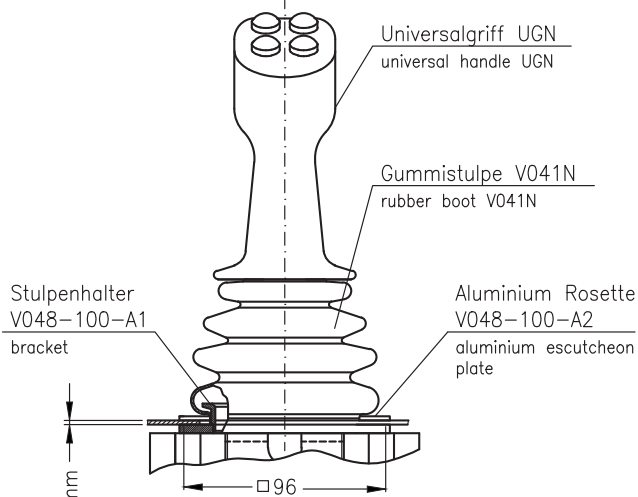


Hinweis:

Auf Wunsch mit geschraubter schwarzer Aluminiumrosette 96x96
On request with screwed black aluminium escutcheon plate 96x96

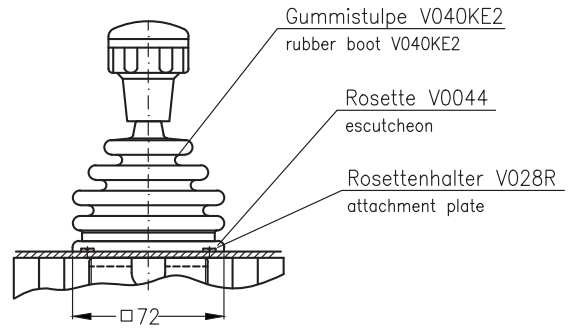
Ausführung VCS0 S1...

mit Stulpenhalterrossette S1
with bracket for rubber boot + escutcheon plate



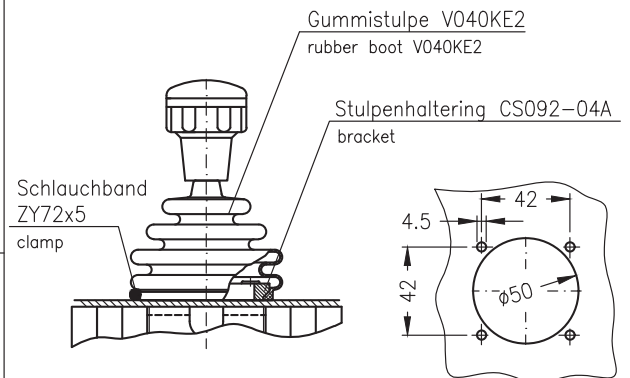
Ausführung VCS0 72...

mit Aluminium Rosette schwarz 72x72, nicht beschriftbar
with aluminium escutcheon plate black 72x72, not inscribable



Ausführung VCS0 S0...

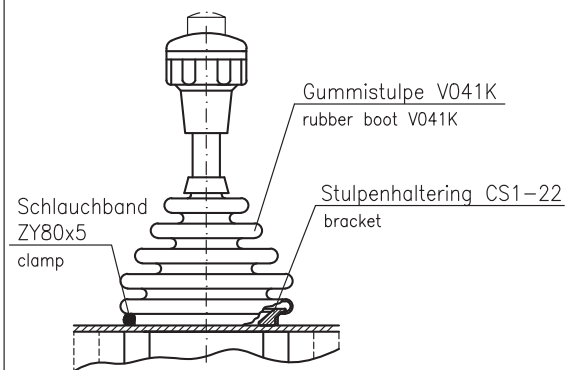
mit Stulpenhalterung S0
with bracket for rubber boot



Befestigungsbohrung
mounting holes for

Ausführung VCS0 S...

mit Stulpenhalterung S
with bracket for rubber boot

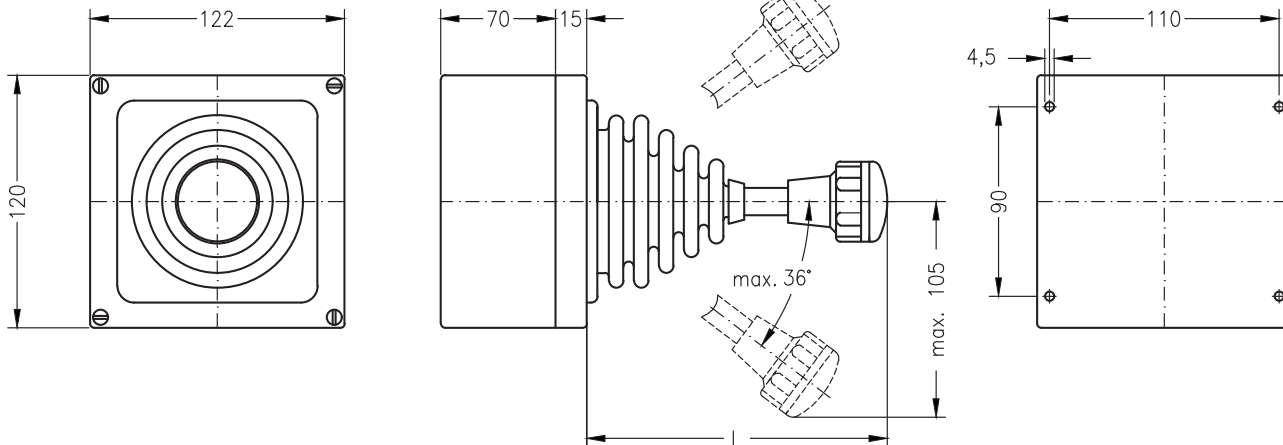


Gewicht ~0,5kg/Schalter
weight ~0,5kg/controller

Typ CS0-M1

M0- M1

Material: PC grau
material: PC grey



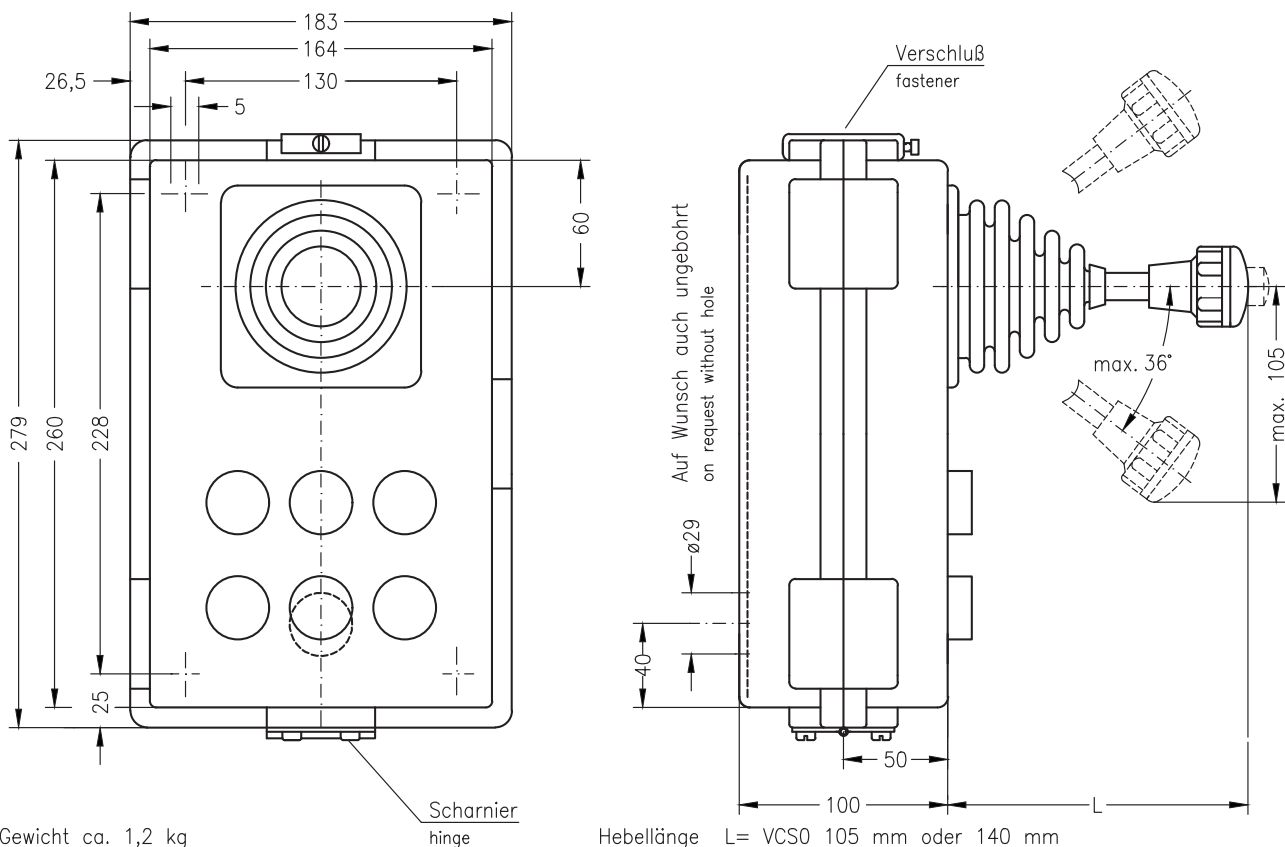
Gewicht ca. 0,8 kg
weight app. 0.8 kg

Hebellänge L= VCS0 105 mm oder 140 mm
shaft length M0 67 mm bzw. 80 mm mit HD

Typ CS0-M3

M0- M3

Material: PA 6 gelb
material: PA 6 yellow



Gewicht ca. 1,2 kg
weight app. 1.2 kg

Hebellänge L= VCS0 105 mm oder 140 mm
shaft length M0 67 mm bzw. 80 mm mit HD