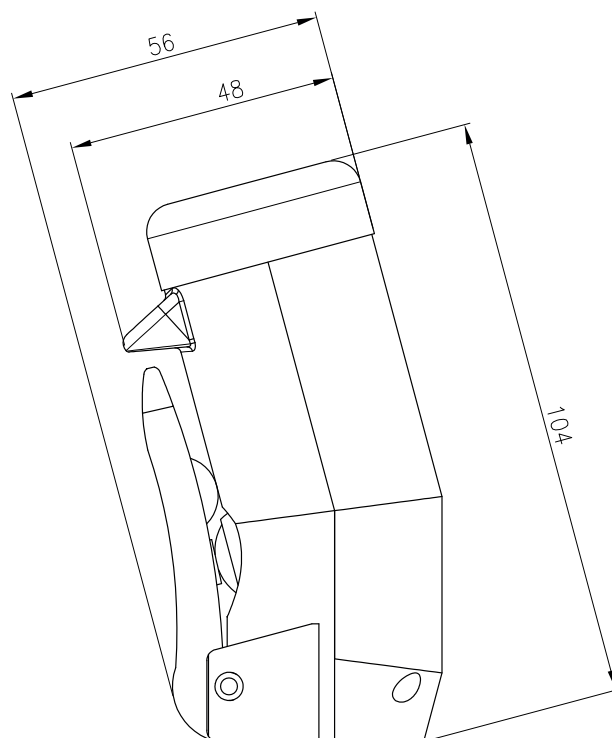


G4T

Compact with lever actuated contact.



The G4T palm handle, which is available in different versions, impresses with its simple, timeless design. Already in the basic version it has a front button, which is easy to operate thanks to the large, molded latch. Optionally, a second push-button, a rocker switch or a rotary

potentiometer can be installed at the top.

This handle is ideal for use on scissor lifts, work platforms, cranes, agricultural and forestry equipment where a lever actuated contact to control a machine is needed.

Versions

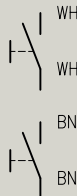
G4T

Handle with:
Lever actuated momentary pushbutton 1NO
Adapter for Spobu joysticks with 8 mm lever



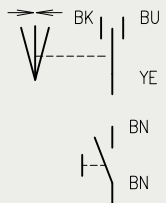
G4T-DT

Handle with:
Lever actuated momentary pushbutton 1NO
Pushbutton on top 1NO
Adapter for Spobu joysticks with 8 mm lever



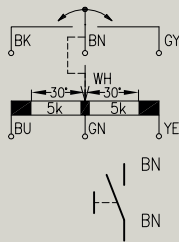
G4T-WT

Handle with:
Lever actuated momentary pushbutton 1NO
Rocker switch on top, transversely installed, 1-0-1, 1 changeover contact
Adapter for Spobu joysticks with 8 mm lever



G4T-G10-GDLR55

Handle with:
Lever actuated momentary pushbutton 1NO
Rotary potentiometer on top, 5k-0-5k with direction signals,
spring return in center position
Adapter for Spobu joysticks with 8 mm lever



Options

Lever actuated momentary pushbutton with 1NO1NC contacts instead of 1NO

Pushbutton 1NO 1NC instead of 1NO

Special adapter

Notes:

Wiring:

0.5 m Teflon single cores AWG24.

For the connection of the potentiometer GDLR55 it is essential to observe the notes on sheet TI-POTI-6.

- Notes on handle wiring and maximum number of cores, see sheet G-V.