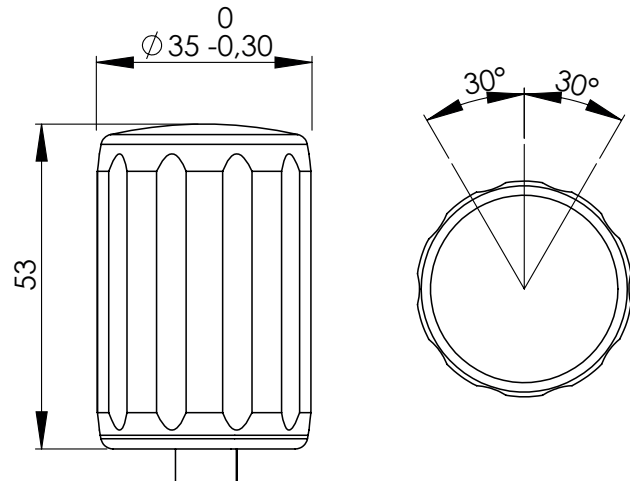
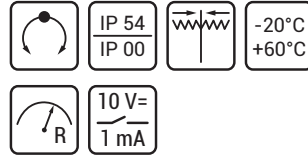


G50

The rotatable.



The compact G50 handle extends the control functions of a joystick by a further axis. Turning the spring-centered handle left or right produces a potentiometric output signal that can be used together with

the directional signals integrated in the potentiometer to perform a wide range of control tasks.

Description

Type

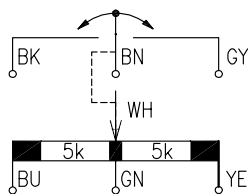
Rotary handle with adapter for Spohn + Burkhardt joystick with 8 mm lever, including potentiometer with directional signals.

G50-8-GDLR55

Rotary handle with adapter for Spohn + Burkhardt joystick with 12 mm lever, including potentiometer with directional signals.

G50-12-GDLR55

Connection:



Supplied with single wires, L = 0.5 m.

Note:

Please observe the instructions for use with conductive plastic potentiometer on page TI-POTI-5.