

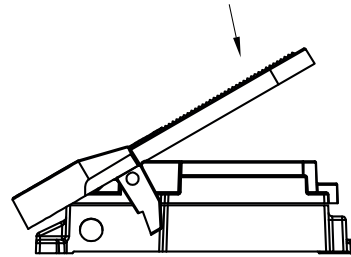
FPS(S), FPW(S)

| | | | |
|---------------|-------|----------------|--------------|
| FPS, FPSS: | IP 42 | 250 V~ 16 A | 30 V= 1 A |
| FPW, FPWS: | IP 42 | 250 V~ 5 A | 30 V= 3 A |

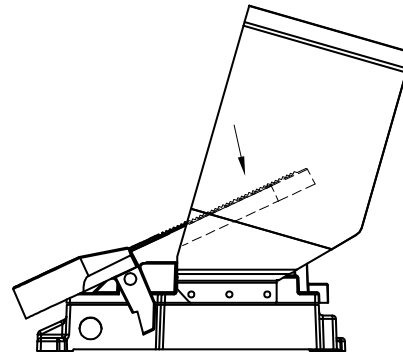
Robust footpedal with aluminium cast housing

Robust footpedal with large, ribbed aluminium tread plate and switching contacts for a maximum of 4 switching steps (FPS) or with potentiometer and directional contacts (FPW).
Optional with protective cover (S).

**FPS
FPW**



**FPSS
FPWS**



Type code

Type code: FPS
FPSS F...
Type _____
Contact circuit _____

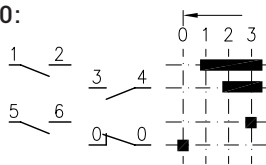
Type code: FPW A PW70d-...
FPWS E
Type _____ AE
Contact circuit _____
Potentiometer _____

Dimensions see page TI-F-1

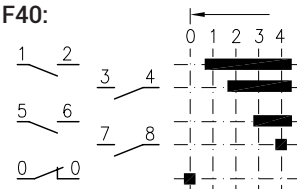
| | Circuit | | Potentiometer | |
|-------------|---------|-----|---------------|--|
| FPS FPSS | F30 | F40 | | |
| FPW FPWS | A E | AE | PW70d-5K | |

Contact circuit

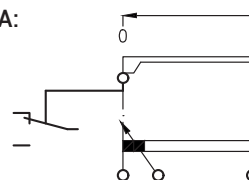
F30:



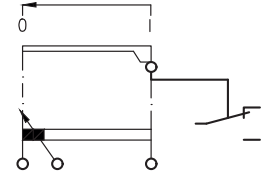
F40:



A:



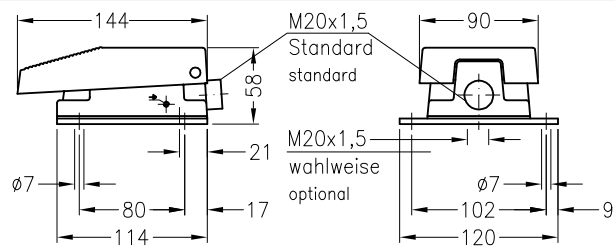
E:



Fußtaster SF
foot pedal

SF_ Schutzart IP42
degree of protection IP42

SF_0d Schutzart IP56
degree of protection IP56



Fußtaster FPS/FPW
foot pedal

Schutzart IP42
degree of protection IP42

